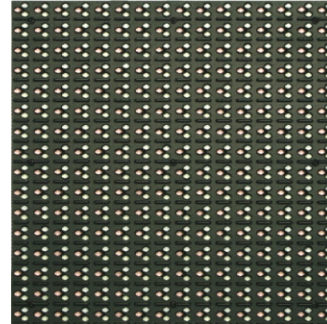


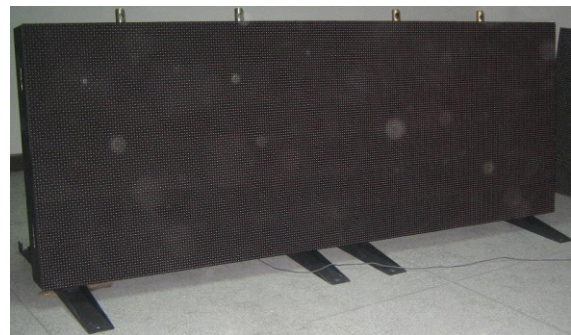
## C – OD – P10 Outdoor (DIP) Perimeter LED Screen

Perimeter LED display (outdoor) with the cabinet design can be tailor-made at any size and shape, simple and easy assembly. Typically the LED display (outdoor) series are applied in outdoor advertising places, downtown square center, wall and top of the building, 2 sides of the express way, moving trucks and other places which need to broadcast information etc



### ■ Feature

- ★ Easy setup and tear down  
Modular design facilitates quick installation and disassemble. Every module includes interlocks, external signal and power sockets.
- ★ Revolutionary DIP to dramatically increase the contrast.
- ★ High reliability with the data hot backup, to avoid any communication risk during the show.
- ★ High refresh rate  
Refresh rate up to 4200Hz, completely flickering-free for live video.
- ★ Superb brightness and color uniformity  
Brightness variance within +/-2.5%, outstanding color uniformity and reproduction.
- ★ Wide viewing angle  
horizontally 120° and vertically 55°



## ■ Specification Detail

Resolution		10mm
Lamp	LED Type	DIP
	Wave Length	R:630 nm
		G:525 nm
		B:470 nm
Brightness	R:600 mcd	
	G:1500 mcd	
	B:350 mcd	
Module	Pixel Configuration	1R1G1B
	Driving Mode	Real Pixel 1/4 scan
	Pitch	10mm
	Pixels	16*16 (W*H)
Cabinet	Module Size	160mm*160mm (W*H)
	Modules	6*4 (W*H)
	Pixels	96*64 (W*H)
	Cabinet size	960mm*640mm*160mm (W*H*D)
	Cabinet Area	0.6144 m <sup>2</sup>
	Net Weight	40KG (Iron)
Display	Waterproof	Front IP65 / Back IP43
	Pixel Density	10000 dots/ m <sup>2</sup>
	Brightness	5500-6000 nit/ m <sup>2</sup>
	Viewing Angle	Horizontal:≥120°;Vertical:≥55°
	Best viewing distance	10m – 100m
	Refresh frequency	≥800 Hz
	Max.power consumption	≤700W/ m <sup>2</sup>
	Adv. Power consumption	≤350W/ m <sup>2</sup>
	Input voltage	AC90-240V
	Out-of-control pixel	≤3/10000
	Average work well hours	≥1000 hours
	Life span	≥100,000 hours
	Operating Environment	Temp:-20℃ – +50℃ Hum:10% – 90%RH
	Intelligent control	Automatic power on/off , brightness automatically and manual adjustment
Video display function	Synchron display kinds of text, graphics, flashes, and any signal from TV, VCD, DVD, Camera, and scanner and so on, support PAL, NTSC.	

## ■ Composition of display

